

90163



901630



NEW ZEALAND QUALIFICATIONS AUTHORITY
MANA TOHU MĀTAURANGA O AOTEAROA

For Supervisor's use only

Level 1 Biology, 2007

90163 Describe the transfer of genetic information

Credits: Three
9.30 am Tuesday 27 November 2007

Check that the National Student Number (NSN) on your admission slip is the same as the number at the top of this page.

You should answer ALL the questions in this booklet.

If you need more space for any answer, use the page(s) provided at the back of this booklet and clearly number the question.

Check that this booklet has pages 2–10 in the correct order and that none of these pages is blank.

YOU MUST HAND THIS BOOKLET TO THE SUPERVISOR AT THE END OF THE EXAMINATION.

<i>For Assessor's use only</i>		
Achievement Criteria		
Achievement	Achievement with Merit	Achievement with Excellence
Describe biological ideas relating to transfer of genetic information. <input type="checkbox"/>	Explain biological ideas relating to transfer of genetic information. <input type="checkbox"/>	Discuss biological ideas relating to transfer of genetic information. <input type="checkbox"/>
Overall Level of Performance <input type="checkbox"/>		

You are advised to spend 40 minutes answering the questions in this booklet.

QUESTION ONE

Persian cats show an inherited condition called PKD (polycystic kidney disease). PKD is caused by a dominant allele D. The recessive allele is d.

- (a) **Describe** what is meant by '**dominant allele**'.

- (b) **Describe** the **genotype(s)** of cats with PKD.

Two Persian cats that are **heterozygous** for PKD, are mated together.

Assessor's
use only

- (c) Complete the Punnett square to identify the proportion of kittens from this mating that can be expected to have PKD.

The proportion of kittens that can be expected to have PKD is _____.

- (d) **Explain** how two cats with PKD can have kittens that do NOT have PKD.

QUESTION TWOAssessor's
use only

The diagram below shows a small section of DNA during replication.

*For copyright reasons, this resource cannot
be reproduced here.*

Adapted from: <http://www.accessexcellence.org/RC/AB/WYW/wkbooks/SFTS/SFTSg/7.gif>

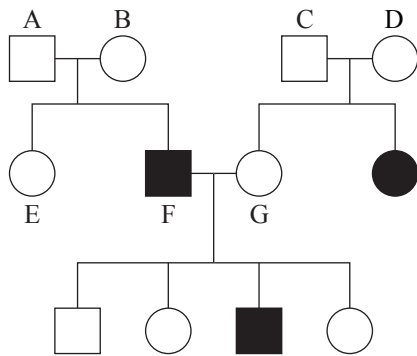
(a) **Describe** what a gene is.

(b) **Explain** how the process shown in the diagram above ensures accurate replication of DNA.

This image shows a blank sheet of white paper with horizontal ruling lines. The lines are evenly spaced and run across the width of the page. There are no margins, text, or other markings on the paper.

QUESTION THREE

The pedigree diagram below shows the inheritance of a type of deafness in a family group.



	Female	Male
Deaf	●	■
Hearing	○	□

- (a) Describe the **phenotype** of Individual F.

- (b) **Explain** how the pedigree diagram above shows that this type of deafness is caused by a **recessive allele**.

- [illegible]

QUESTION FOUR

Potato plants can be reproduced either sexually from seeds, or asexually from the potato tuber or from stem cuttings.

*For copyright reasons,
this resource cannot
be reproduced here.*

<http://www.io.com/~hcexres/textbook/instrxx4c.html>

Cells in some parts of the potato plant undergo meiosis.

- (a) (i) Where does meiosis occur in the potato plant?

- (ii) **Describe** the purpose of meiosis.

- (b) **Explain** how asexual reproduction of potatoes is an advantage to the grower.

-
- This image shows a blank sheet of white paper with horizontal blue ruling lines. The lines are evenly spaced and run across the width of the page. There are no margins, text, or other markings on the paper.

**Extra paper for continuation of answers if required.
Clearly number the question.**

Assessor's
use only

Question
number

[illegible]

